

CENTRAL THICKENED  
DISCHARGE FOR TAILINGS  
FACILITY CLOSURE

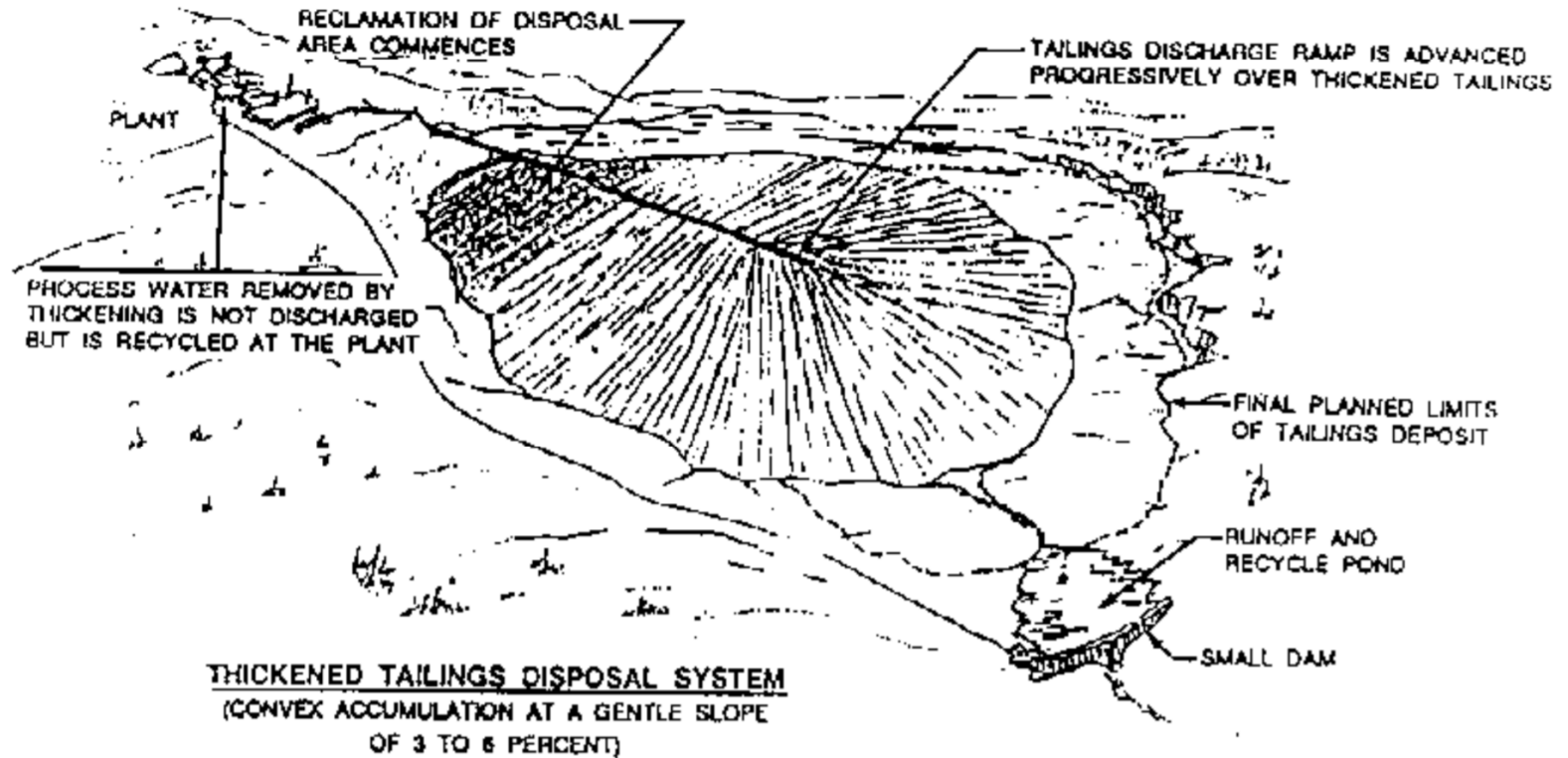
- Our Strong Historical Relationship
- Going Forward
- How We Are Now Structured
- Our Services and What Sets Us Apart
- Project Advocacy
- Our Strengths
- Why Retain Us
- Our Commitment

# ***Knight Piésold***

---

# WHAT IS CTD?

The original concept: Robinsky, 1975



Design Objective was to Reduce Impacts of Liquefaction

# FROM MY FRIEND ANDY FOURIE



THE UNIVERSITY OF  
WESTERN AUSTRALIA  
*Achieving International Excellence*

Tailings and Mine Waste Management  
for the 21st Century  
27-28 July, Sydney, NSW

## BAP or BAT? A review of some dramatic changes in tailings management in the recent past and potential changes in the future

Andy Fourie

School of Civil, Environmental & Mining Engineering

## Paste and TT Impoundment Types:

### 1. Central Thickened Discharge (CTD)



De Beers Kimberley CTP, South Africa

# Knight Piésold

## Kidd Creek

THE UNIVERSITY OF WESTERN AUSTRALIA  
*Achieving International Excellence*



48 34 N, 81 05 W    Keyson • Keyson

Image © 2012 DigitalGlobe  
© 2012 Google  
Image NASA

Imagery Date: 7/27/2005    2005    48°34'34.13" N 81°05'10.84" W elev. 291 m    Eye alt. 6.55 km

Google earth





THE UNIVERSITY OF  
WESTERN AUSTRALIA  
*Achieving International Excellence*

## Mt Keith





# WHY USED CTD FOR CLOSURE?

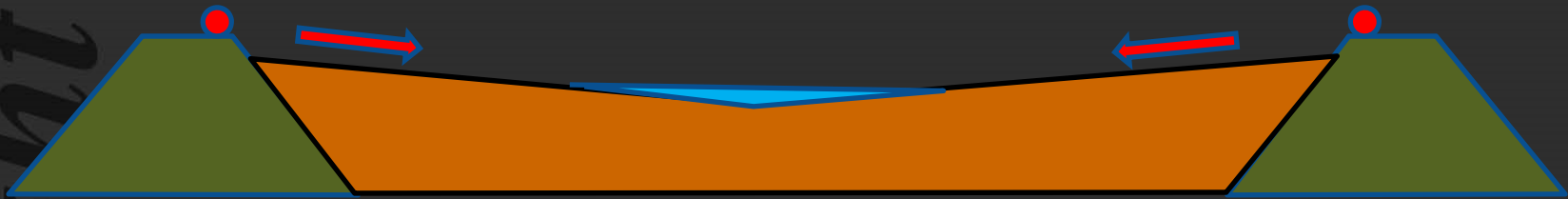




# ...THE BATHTUB

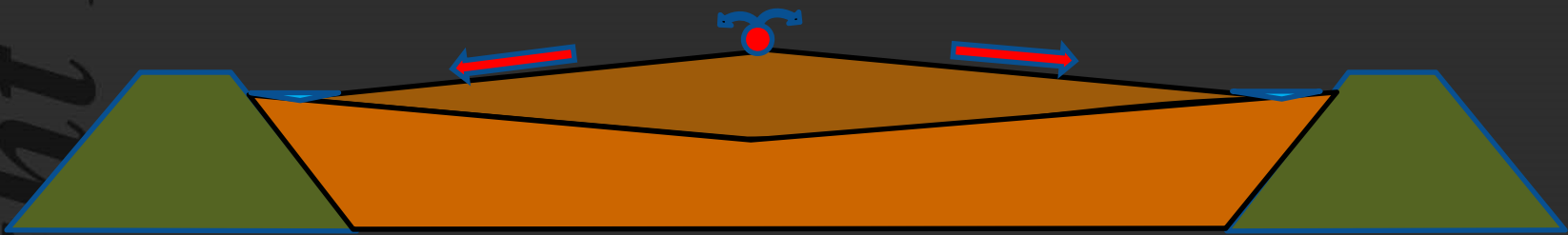


Knich4 Dióscold



**CONVENTIONAL PERIMETER DISCHARGE AND CENTRAL POOL**

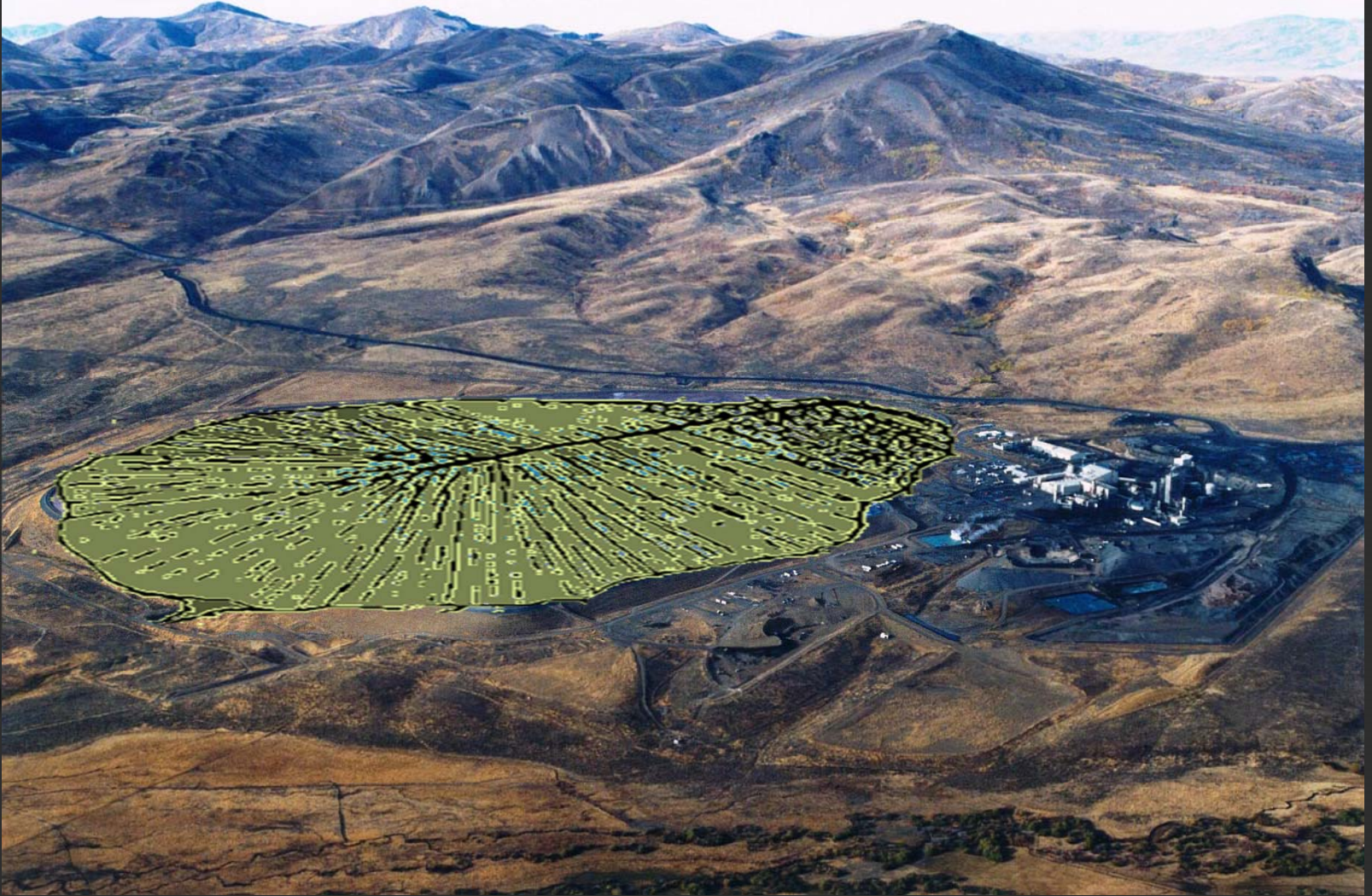
*Knights Piésold*



**CONVERSION TO CENTRAL THICKENED DISCHARGE FOR  
CLOSURE**



# *Knights Piésold*



*Knight Piésold*  
CONSULTING

*Knight*

Figure 6-9: Covers and Climate Types (modified from Holdridge et al., 1971 by Wickland and Wilson)

